

COVID-19 Update

Janel Heinrich, Director

Public Health Madison & Dane County

December 1, 2020

Cases Over Time

FEBRUARY 5
First case identified

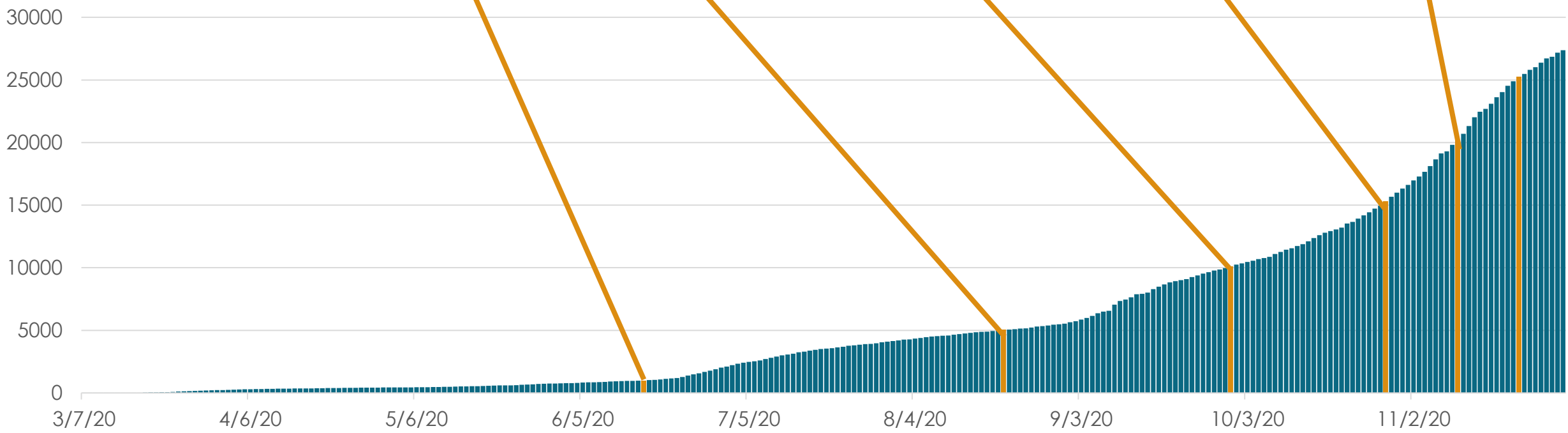
**ABOUT 4M
LATER**
Reach 1k cases
(June 16)

**ABOUT 2M
LATER**
Reach 5k cases
(August 20)

**ABOUT 40D
LATER**
Reach 10k cases
(September 30)

**ABOUT 1M
LATER**
Reach 15k cases
(October 28)

**ABOUT 2W
LATER**
Reach 20k cases
(November 10)



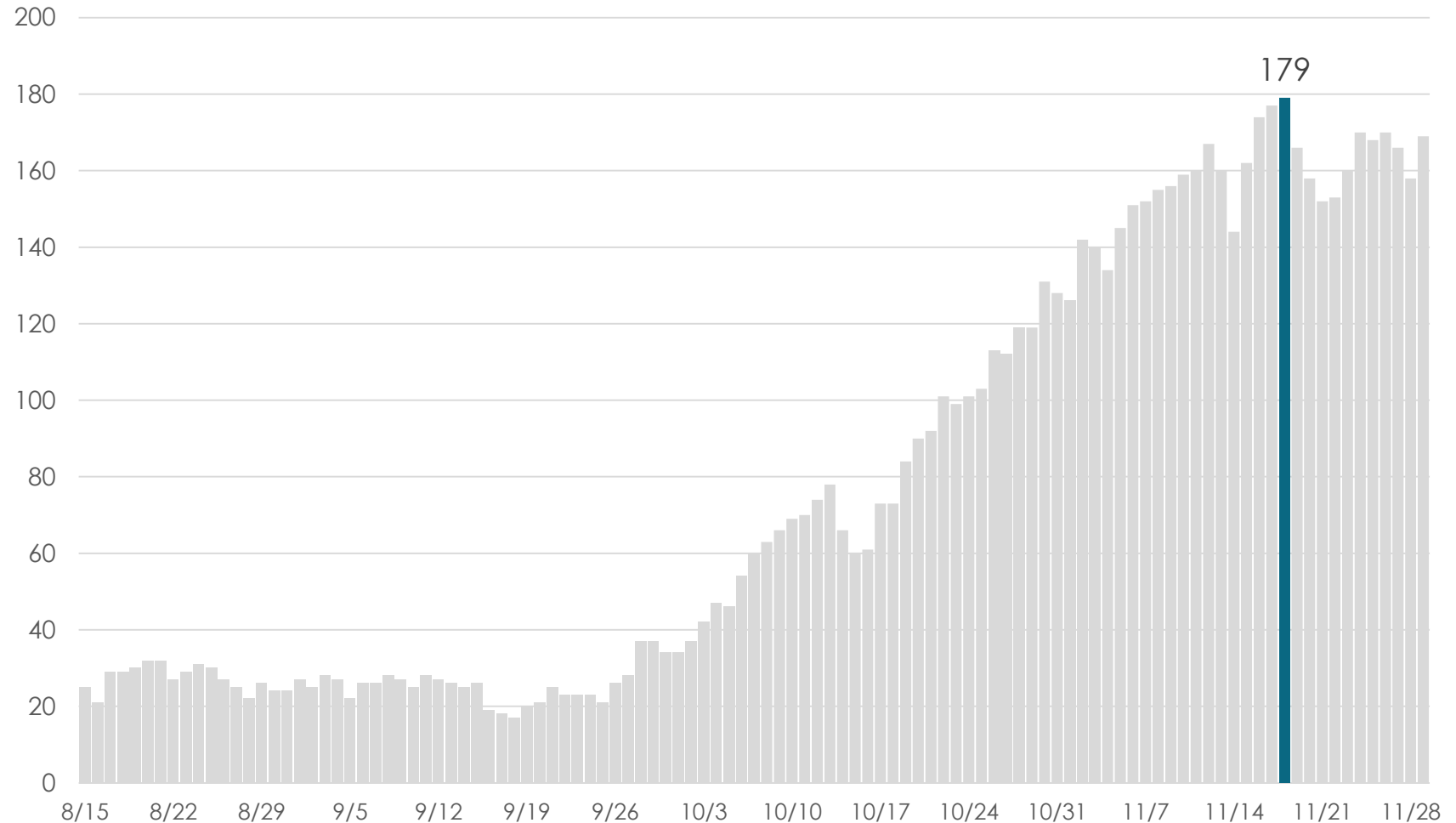
We're adding cases more rapidly

**February 5 to
September 5** | **6,159 cases**
214 days

**November 9 to
November 22** | **6,178 cases**
14 days

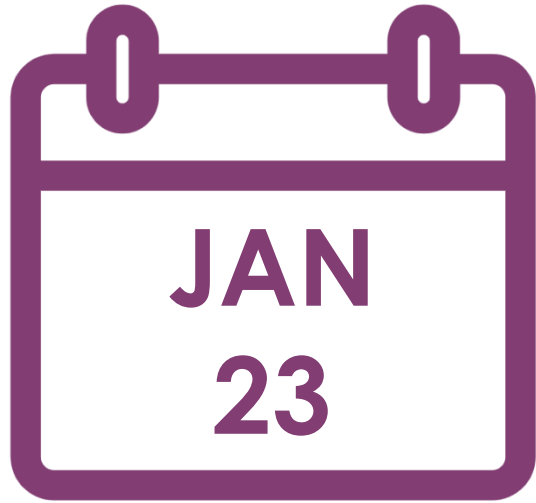
Hospitalizations

Hospitalizations remain elevated, with high proportions in the ICU.



**OUR
RESPONSE
TOOLS**

Response Team



~10
people



~140
people



~350
people

Response Tools



Public Health Orders

Minimizing opportunities for virus to spread

MARCH 13

Issue first order restricting gatherings to 250 people

MARCH 16

Issue order closing schools and limiting gatherings to 50 people

MARCH 25

Statewide Safer at Home Order goes into effect

MAY 13

Dane County Safer at Home order goes into effect

MAY 18

Forward Dane plan released, Prepare for Reopen order issued

MAY 26

Phase 1 order goes into effect which opens most businesses to 25%

JUNE 5

Issue order revising mass gathering criteria

JUNE 15

Phase 2 order goes into effect which opens most businesses to 50%

Response Tools



Public Health Orders

Minimizing opportunities for virus to spread

JUNE 25

Order is amended to reduce gathering size & eliminate standing service

JULY 2

Order issued to reduce restaurant capacity to 25%, closes bars to indoor service

JULY 13

Dane County face covering order goes into effect

AUGUST 24

Order issued requiring grades 3-12 to start year virtually

SEPTEMBER 2

Order amended to allow for in-person instruction for students with a disability or IEP

NOVEMBER 18

Order issued prohibiting indoor gatherings, outdoor gatherings limited to 10 people or fewer

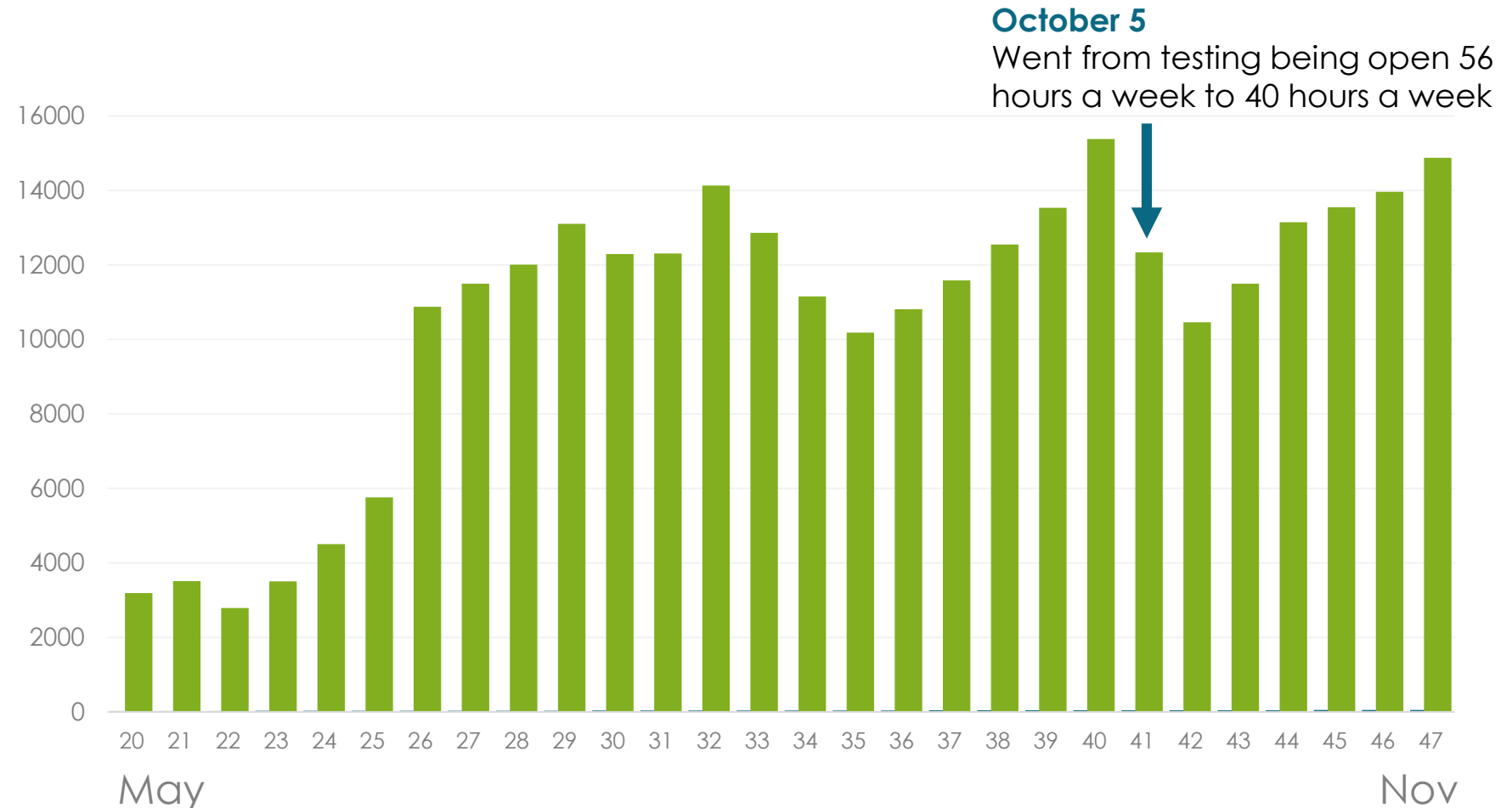
Response Tools



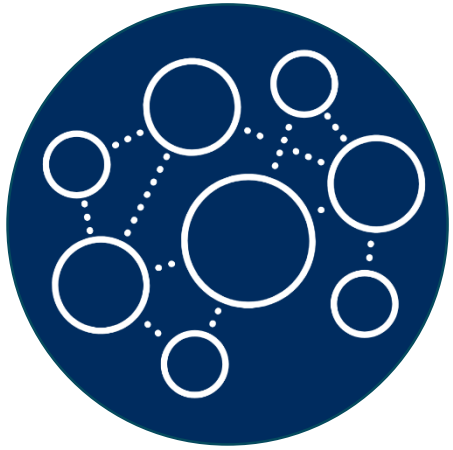
Testing

Identifying new cases in our community

Tests completed at Alliant Energy Center by week



Response Tools



Contact Tracing

Containing spread
of virus in our
community

130+ tracers

People doing contact tracing work

70+ support staff

People coordinating, analyzing, and
directly supporting contact tracing work

Response Tools



Data

Collecting and analyze data to drive decision-making



Communications

Crafting and sharing messages; responding to community questions



Technical Assistance

Answer questions, develop guidance, connect with resources

Technical Assistance - Liaisons

Schools

Legal

Food Security

Healthcare

Housing

Faith Community

Aging Population

Business

Community
Centers &
Neighborhood
Associations

Community Based
Nonprofits &
Planning Councils

**LOOKING
AHEAD**

COVID-19 Mass Vaccination

COVID-19 vaccines are making their way through trials and approvals to ensure they are safe.

Recommendations for who will receive vaccine first are set federally. Vaccine will not be widely available until later in 2021, at the earliest.

We are working with our local healthcare and community partners to plan for equitable, ethical, and transparent distribution of COVID-19 vaccines.



COVID-19 Mass Vaccination



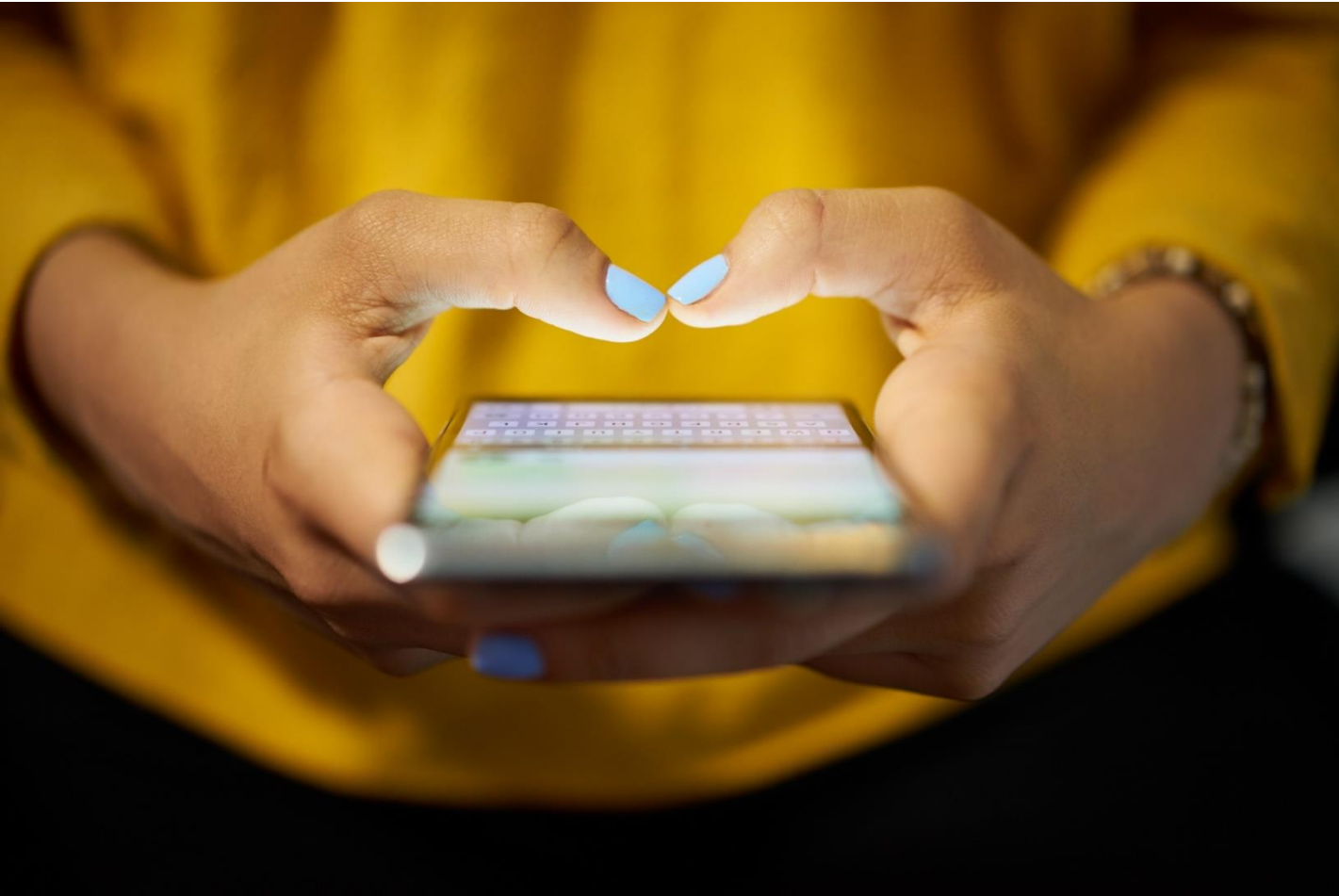
COVID-19 vaccines, when available, will be given in stages to the public. During this time, everyone needs to continue to prevent the spread of COVID-19 by avoiding close contact, crowds, and confined spaces with little ventilation.

There's still a lot we're still learning about the vaccine, like if multiple doses will be required and how effective it is at preventing illness long-term.

STAY

UP-TO-DATE

Subscribe & Follow for Latest Info



Subscribe to news releases
cityofmadison.com/news

Subscribe to blog posts
publichealthmdc.com/blog

**Follow us on Facebook,
Twitter, and Instagram**
[@publichealthmdc](https://www.facebook.com/publichealthmdc)

COVID-19 Update

Janel Heinrich, Director

Public Health Madison & Dane County

December 1, 2020